



CWF Technical Assistance for the Root River MRBI Project

**Fillmore
Soil and Water
Conservation District**

**Clean Water Fund Grant
Awarded \$ 25,000**

Grant Period (incl. extensions)
From: October 20, 2010
To: June 30, 2012

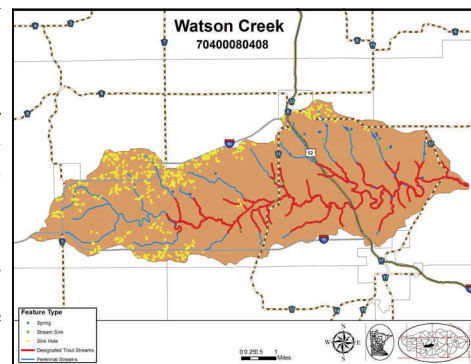
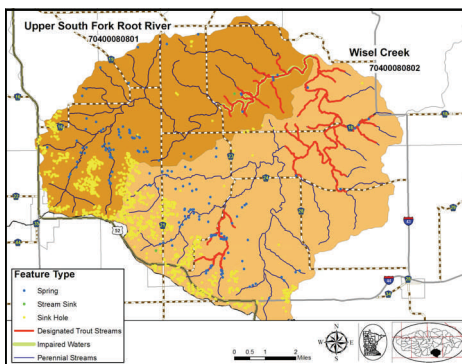
Funds Returned to State
Type \$0
Date Fund Returned: N/A

Budget by Category

Administration/ Coordination	
Project Development	
Technical and Engineering (\$ 25,000
Construction	
Total CWF Budget	\$ 25,000

PROJECT CONTACT
Donna Rasmussen, Administrator
507-765-3878, ext 3
donna.rasmussen@fillmoreswcd.org

*Prepared by Fillmore SWCD
for BWSR Website Reporting Requirements*



The Mississippi River Basin Initiative (MRBI) was developed by the USDA Natural Resources Conservation Service to solve water quality issues related to nutrient and sediment runoff contributing to local water quality issues and to hypoxia in the Gulf of Mexico. The Fillmore SWCD submitted MRBI applications for two subwatersheds in the Root River watershed: Watson Creek and the Upper South Fork Root River/Wisel Creek. Priority practices in these watersheds are ag waste storage for dairy and beef producers, nutrient management for operations utilizing manure, and grazing management. These priorities take advantage of the existing technical staff in the SWCD office and benefit livestock production, which is crucial to maintaining hay and pasture acres on the steep terrain of the Root River watershed. Other practices being promoted include cover crops, no till/strip till, streambank protection, buffers, grassed waterways, contour buffer strips, grade stabilization structures, water and sediment control basins and forest management practices..

Outputs and Outcomes

Outputs: Two SWCD technicians, each with 25 years experience working with SWCD and NRCS programs and practices. The TA funding will support their work for 1-2 days per month in both watersheds to conduct outreach and promotion of MRBI-EQIP and WHIP practices and to provide technical assistance to landowners implementing practices. They will primarily work on soil erosion control practices, such as grassed waterways, terraces, and grade stabilization structures. Practices will need to meet the FOTG standards. The existing technical staff working in these watersheds will be the Engineering Technician, the Root River Grazing Specialist, and the Nutrient Management Specialist. The Engineering Technician has 8 years of experience designing feedlot fixes with the JPB Engineer, managing state cost share projects and grants, regional 319 grant projects and those funded using MPCA base grant funds. She completed 18 feedlot projects in 2010. The Grazing Specialist has been with the SWCD since April of 2009. He also is a farmer who practices rotational grazing on his farm. He has been working closely with NRCS Grazing Specialist to implement EQIP prescribed grazing contracts with about 35 producers on about 4,000 acres, as well as writing new grazing plans. The Nutrient Management Specialist has been doing nutrient management plans with the SWCD since March 2007. She previously worked for a local cooperative. She is a certified planner with NRCS developing new and updated comprehensive nutrient plans for over 120 producers on over 50,000 acres.