



BWSR FY2016 Targeted Watershed Grant: Root River Field to Stream Partnership

Fillmore Soil and Water Conservation District

BWSR Grant Awarded
\$ 493,233

Grant Period (incl. extensions)
From: August 9, 2016
To: December 31, 2020

Funds Returned to State
Type \$0
Date Fund Returned: N/A

Expenditures by Category

As of 12/31/2019

Grassed Waterway Installation	\$ 25,248.41
East Willow Creek Flood Control Structure Restoration	\$ 140,231.08
Non-structural Management Practices	\$ 31,230.00
Technical and Engineering	\$ 67,647.51
Water Storage Structures	\$ 20,713.54
Administration/Coordination	\$ 8,868.97
Total Expenditures	\$ 293,939.51

PROJECT CONTACT

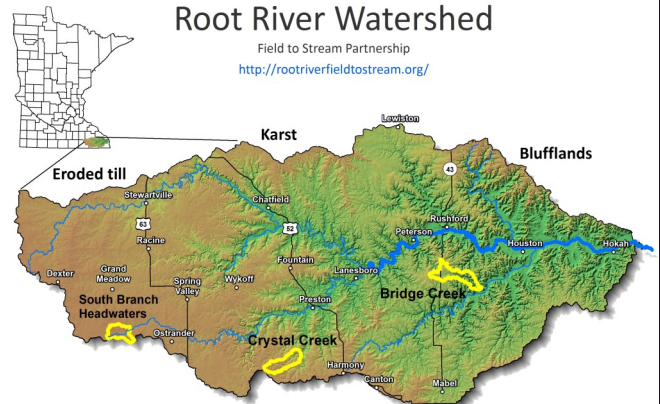
Laura Christensen, Administrator
507-765-3878, ext 122
laura.christensen@fillmoreswcd.org

*Prepared by Fillmore SWCD
for BWSR Website Reporting Requirements*



Since 2009, the Root River Field to Stream Partnership (FSP) (<http://rootriverfieldtostream.org/>) has been working in three small subwatersheds of the Root River (Bridge Creek, Crystal Creek and South Branch Headwaters) to build trust with local landowners and to fill a critical gap in understanding of how pollutants transported at the field scale translate into downstream water quality. The FSP is a cooperative project between state (MN Dept. of Ag) and local government (Fillmore, Root River and Mower SWCDs), farmers, several agricultural groups and The Nature Conservancy. The primary goals are to evaluate nutrient and sediment losses from agricultural fields and measure the effectiveness of conservation practices at both the field and watershed scale. Six years of intensive baseline monitoring and extensive planning to prioritize and target conservation practices provides a comprehensive framework for evaluating practices and guide future implementation activities. Monitoring will continue for at least five years after practices have been installed. The FSP is one of the most comprehensive and intensive studies of its kind in the upper Midwest. Overall, the project offers the unique opportunity to assess what is possible for attaining water quality goals in agriculturally dominated watersheds. Although the project is focusing on three small sub-watersheds of the Root, the information and conservation delivery approach can be applied across the Root River watershed and greater southeastern Minnesota.

The funding from this grant is paired with \$804,385 from a FY2016 Clean Water Fund Grant for implementation of BMPs in the watersheds, including both structural and non-structural practices (cover crops, N management), restoration of a flood control structure in Crystal Creek watershed, and administrative and technical assistance from staff in the Root River, Mower and Fillmore SWCD offices and other technical



Outputs and Outcomes

Outputs:

2016: Completed two water and sediment control basins; three waterway projects in the works using state funds and three waterway projects with FY2017 EQIP applications. (cont'd on page 2)
2017 & 2018 & 2019: See page 2

Outcomes (cumulative):

Water pollution reduction estimates for projects completed:
Estimated Phosphorus reduction = 546.15 lbs./year
Estimated Sediment (TSS) reduction = 167.45 Tons/year
Estimated Soil saved = 418.30 Tons/year



BWSR FY2016 Clean Water Fund Grant: Root River Field to Stream Partnership Phase II Implementation

2016:

Grassed waterways: Planning was completed with five cooperators for six waterway projects for construction in 2017, three of which are in two applications for EQIP funding.

Water storage practices: One project for two water and sediment basins completed. TAA: Cody Fox with Aaron Gamm in training.

Technical assistance: Mower SWCD technician completed on project for two water and sediment basins.

Planning was completed with five cooperators for six waterway projects for construction in 2017, three of which are in two applications for EQIP funding. There was also staff time for meetings, survey, and investigation on a possible two stage ditch project. 155 hours @\$32.98/hr.

Administration/Coordination: Mower SWCD Administrator meetings with technicians regarding project planning, funding, etc. 12 hrs @\$64.96

2017:

Cost share contract CC 16-11 approved by the Fillmore SWCD Board and 2 partial payments approved for sediment removal (~20,000 cu. yds.) and seeding/mulching completed in November and December. Soil borings were completed and analyzed by Chosen Valley Testing (paid in August). Some earthwork still to be completed in spring 2018. JAA: Pete Fryer, TSA Engineer

Two grassed waterways completed (2761' and 1150'); JAA: Elizabeth Oolman, NRCS.

Mower SWCD Admin: 2 progress meetings with MDA and Fillmore SWCD staff; project planning meetings with staff; processing project payments and invoicing Fillmore SWCD for reimbursements of project and TA/admin costs: 12 hrs @\$67.29 + 5 hrs @\$54.46.

Mower SWCD technical staff completed 2 grassed waterways (3911' total). Three EQIP applications were submitted for FY2018 funding. Staff attended two progress meetings for the project and met multiple times with the farm walkover technician and MDA staff re: planning individual projects. 143.5 total technical staff time.

2018:

One grassed waterway completed (1545'). JAA: Cody Fox. 2 waterways were completed with EQIP assistance and funding. 2,754' of waterway. JAA: Elizabeth Oolman, NRCS Ag Engineer and Cody Fox, Project Manager.

Mower SWCD Admin: Two progress meetings with MDA and Fillmore SWCD staff (March and November); processing project payments and invoicing for reimbursements and grant tracking; assistance with grant reporting. JC: 2 hrs @\$57.44 + 10 hrs @\$58.32 + 8 hrs @\$57.25; JH 5 hrs @\$72.51, WG 8 hrs @\$40.76

Technical Assistance: One grassed waterway was completed ((1545') and two EQIP waterways were completed (2208' and 546') with technical assistance from Mower SWCD; one (643') completed by landowner. One waterway project carried over to 2019. Two CRP waterways are in the design phase. Technical staff met for a project progress update 3/28/18 with NRCS, MDA and Fillmore admin staff and on 11/28/18 with new staff. Numerous meetings were held with landowners, the Walkover Technician and NRCS staff regarding progress and funding. 1/1-6/30/18 TA: JH 9 hrs @\$72.51; WG 28.5 hrs @\$40.76, CF 12 hrs @\$58.36; 7/1-12/31/18 TA: JH 10 hrs @\$73.39 + 30 hrs @\$72.32; CF 26.5 hrs @\$58.36 + 27 hrs @\$62.58. Walkover Tech: 205.8 hrs @\$35/hr + 1396 miles @\$5.545 + 10.5 hrs 4 wheeler @\$35/hr

2019:

Completion of final touches on E-3 structure clean-out (\$1,493.84) JAA: SE JPB Staff

One grassed waterway (975') completed (\$3,825) JAA: Cody Fox, Mower SWCD

Two non-structural management practices—forage and biomass plantings—total of 10.44 ac at payments of \$300 per acre per year for a total of ten years (\$31,230.00) JAA: Mower SWCD staff

Administration: grant tracking, coordination meetings, process payments, invoicing—Mower SWCD 20hrs (\$1,449.44) and Fillmore SWCD 64.5hrs (\$3,245.64)

Technical Assistance: Mower SWCD technicians completed one grassed waterway and two forage and biomass plantings JAA: CF 11hrs @ \$64.79, JH 3hrs @ \$78.16, PH 31.5hrs @ \$38.88. The Fillmore SWCD technicians worked on conservation practices in targeted watershed WG 7.33hrs @ \$52.76, DK 5hrs @ \$48.19, AK 142.5hrs @ \$68.49, AM 110.75hrs @ \$50.90.