



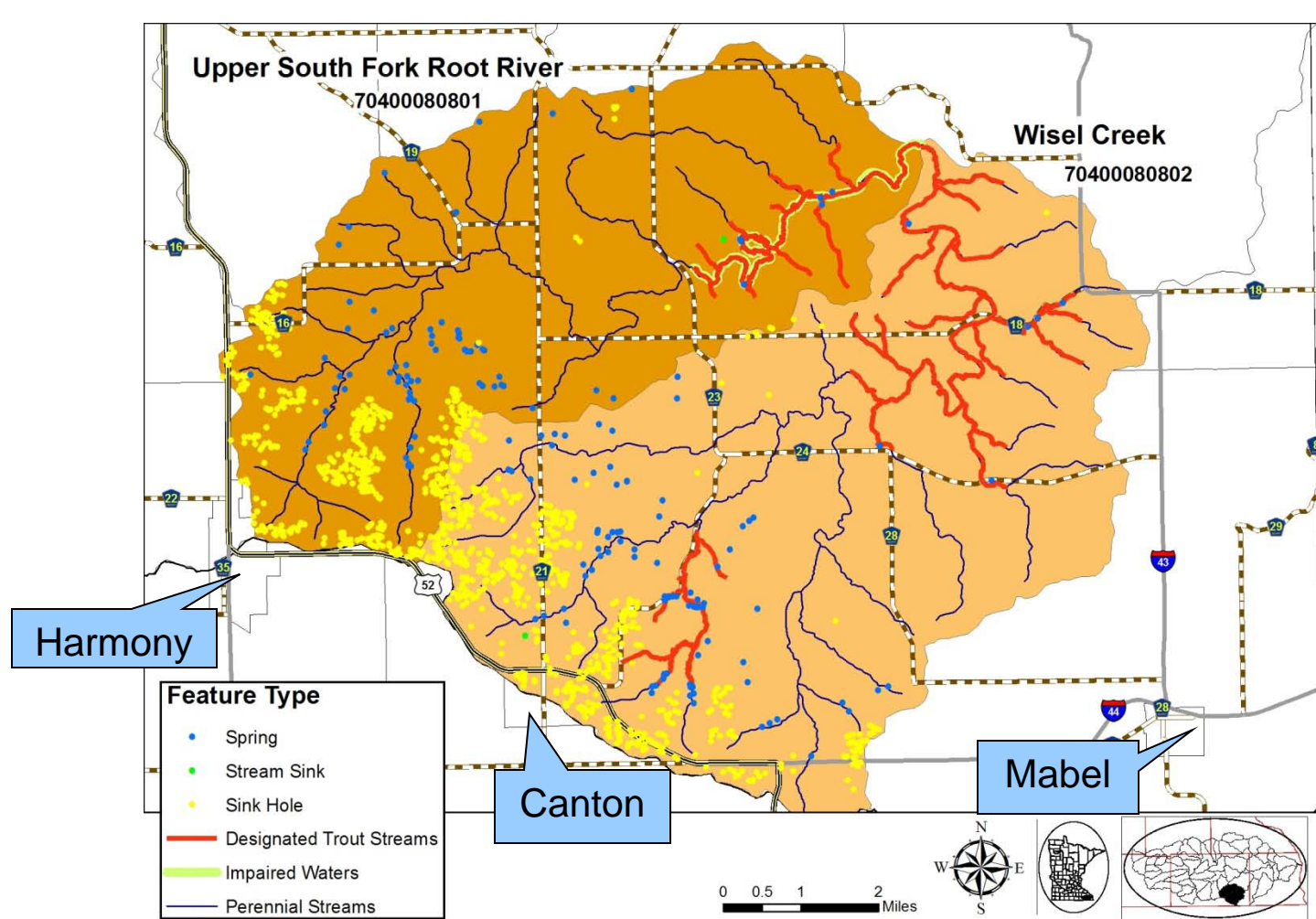
Mississippi River Basin Healthy Watersheds Initiative (MRBI) for the Root River Watershed



If you are in one of these watersheds and have needs for conservation practices on your land, please contact the Fillmore SWCD/NRCS Office for further information at 507-765-3878 or go to www.fillmoreswcd.org

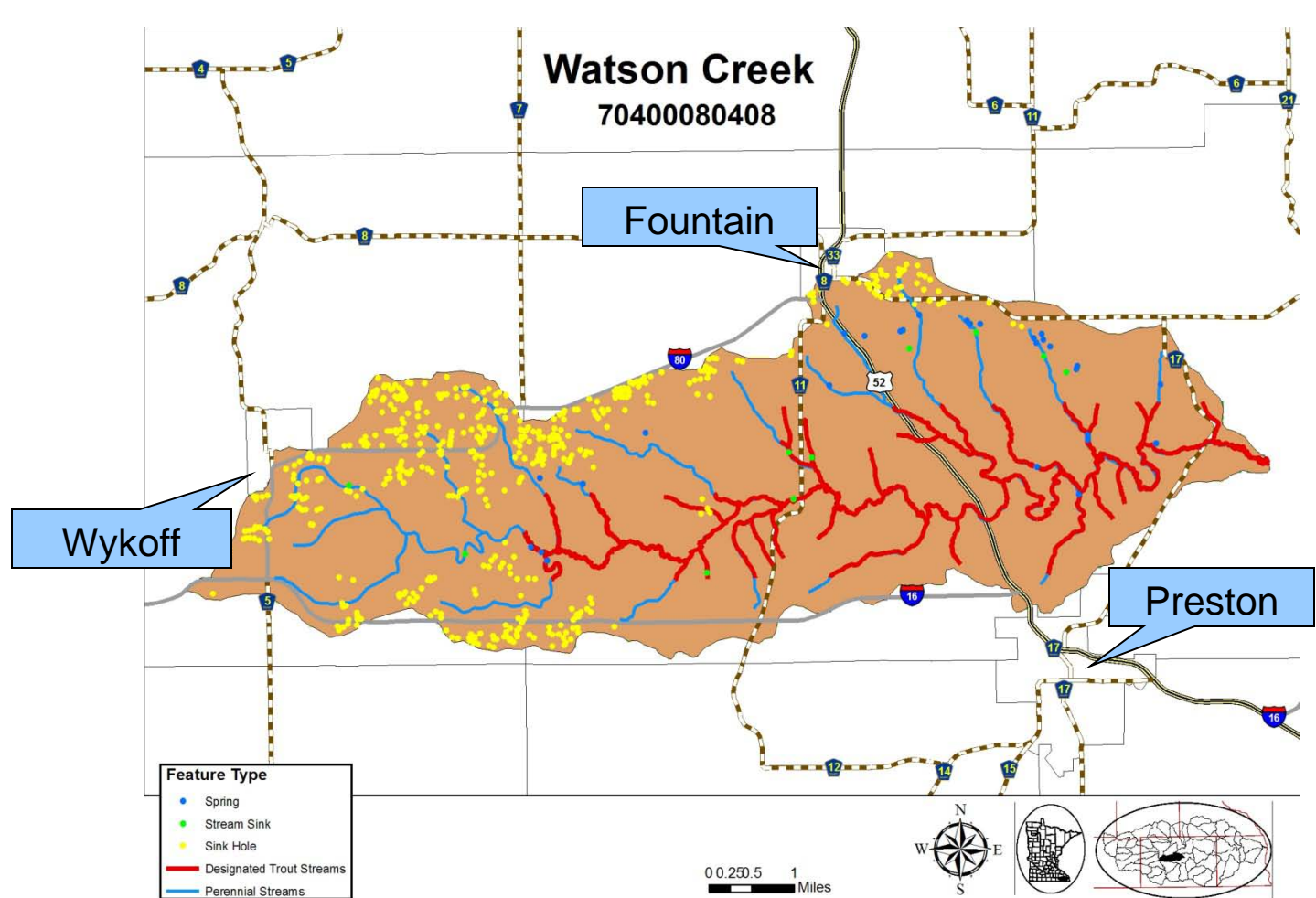
Eligible Conservation Practices:

- *Cover Crops
- *Manure Storage
- *Grazing Management
- *Water and Sediment Basins
- *No-Till
- *Nutrient Management Plans
- *Buffers
- *Plus Other Practices



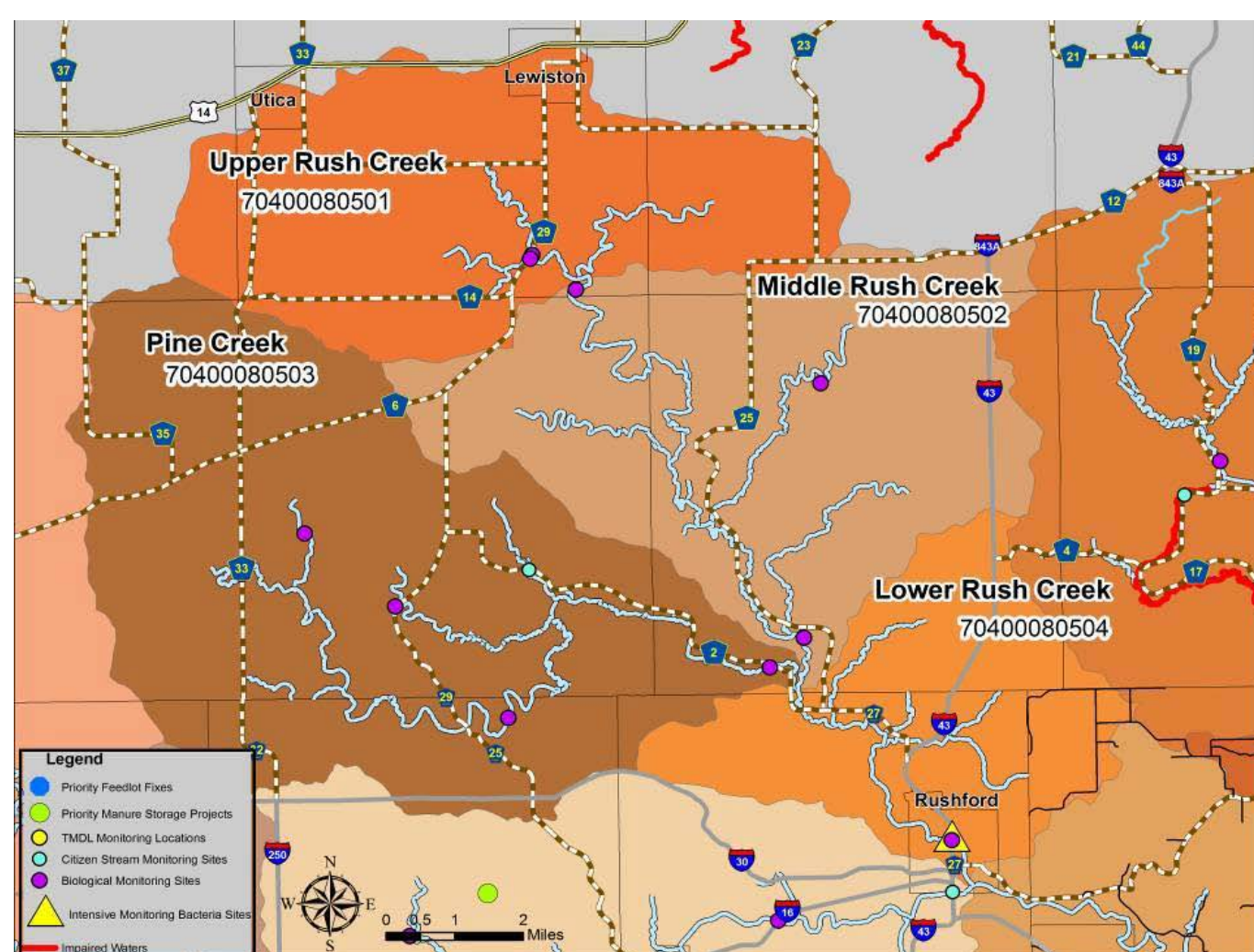
Upper South Fork Root River Watershed:
\$427,920.00 per year for up to 4 yrs

2010 projects:
\$300,000 for one ag waste storage



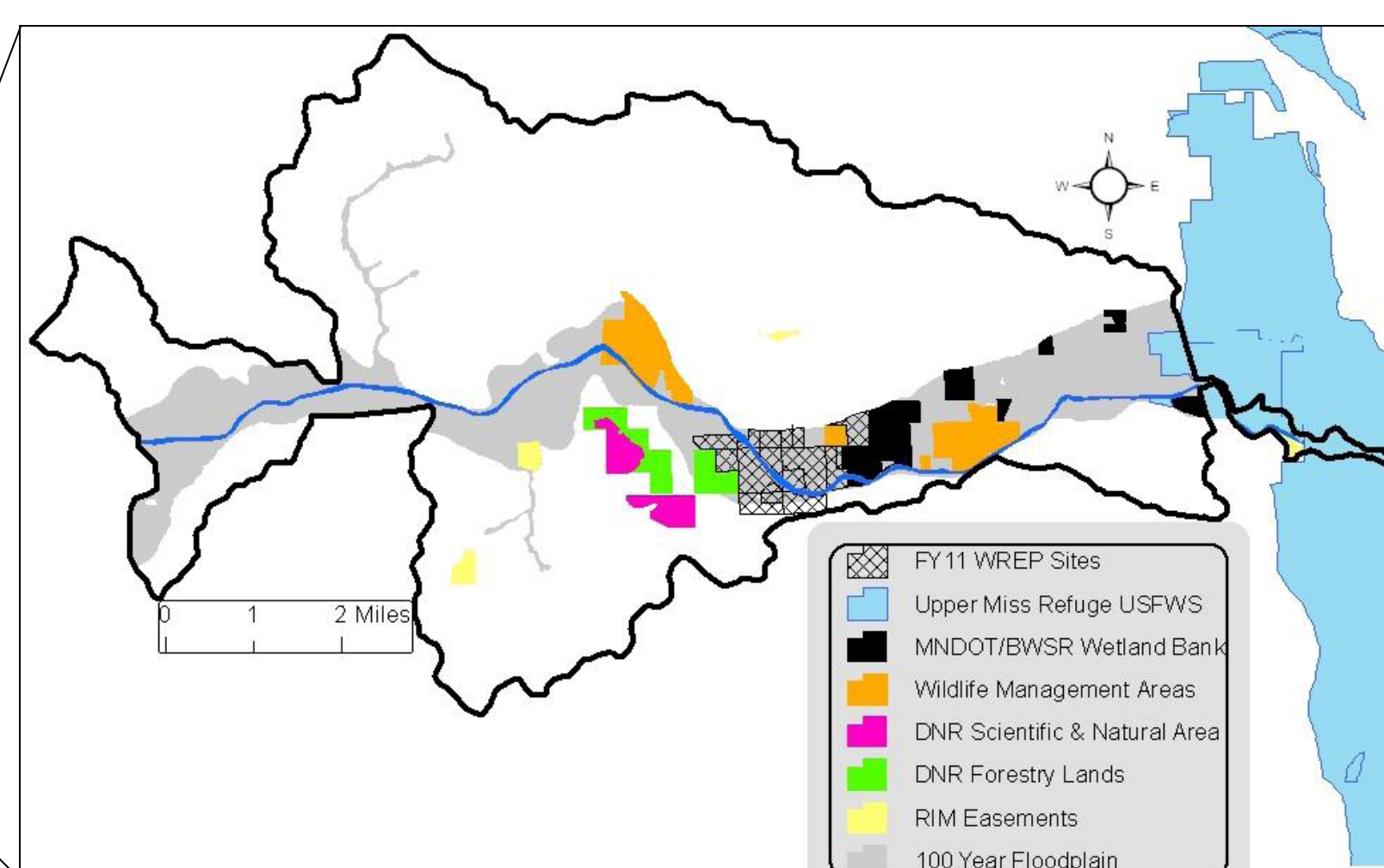
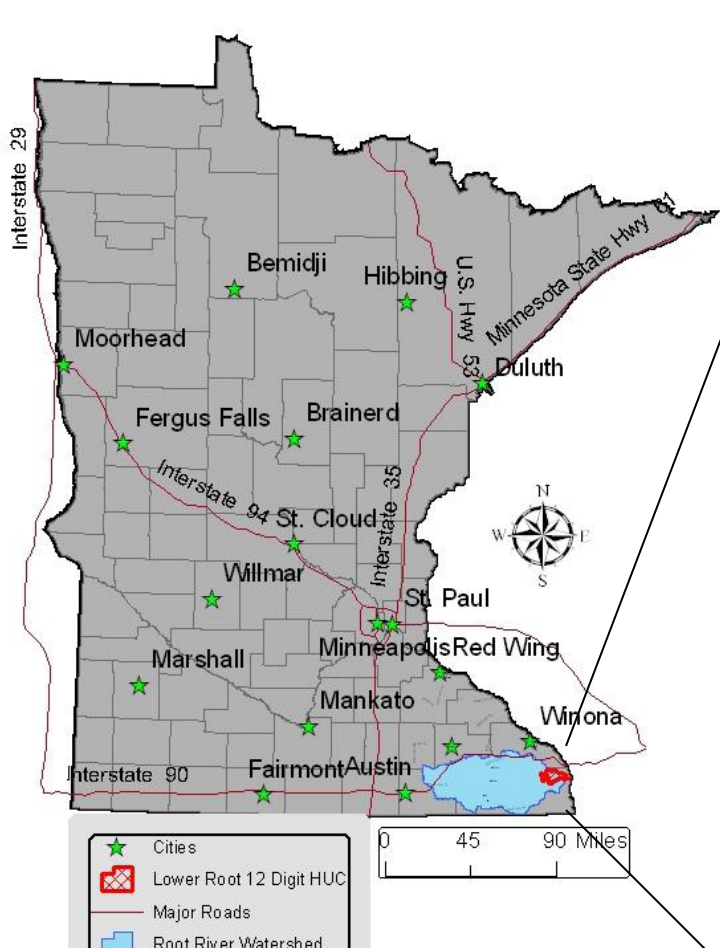
Watson Creek Watershed:
\$362,100.00 per year for up to 4 yrs

2010 projects:
\$507,488 for two ag waste systems and five nutrient management plans



Rush-Pine Creek Watershed: **\$1,128,479 per year for up to 4 yrs**

2010 projects in Fillmore County and Winona County:
\$385,270 for 9 contracts (nutrient management plans, grade stabilization structures, ag waste system)



Lower Root Wetland Reserve Program (WREP):

\$1.5 to \$2.4 million per year to connect private, state, federal and non-government lands to restore floodplain areas and reduce flooding in the Hokah area

2010 Projects:
\$136,002 for 3 easements (84.1 acres)