

White Spruce

Picea glauca



Mature



Native Range

General Attributes

Type	Evergreen Tree
Height	50 - 75 Feet
Spread	20 - 40 Feet
Form	Conical
Utility Lines	Incompatible
Growth Rate	Medium
Life Expectancy	Long
USDA Zone	2 - 6
Root Pattern	Shallow Lateral

Plant Community

Sun	Full Sun, Partial Sun, Shade
Orientation	North, South, East, West
Soil Texture	Loam to Clay
Topography	Upland, Lowland (Stable Water)
Plant Community	Forest, Old Field
Succession	Intermediate
Origin	MSA Zone 1, MSA Zone 2, MSA Zone 3, MSA Zone 4, MSA Zone 5, Minnesota, North America

Flowers/Foliage/Fruits

Flower Color	Purple
Flower Season	Spring
Fruit	Cone
Fruit Color	Tan
Fruit Season	Spring, Summer, Fall, Winter
Summer Texture	Medium
Winter Texture	Medium
Spring Foliage	Green
Summer Foliage	Green
Fall Foliage	Green
Winter Foliage	Green

Soils

Salt Spray Tolerance	Sensitive
Soil Salt Tolerance	Sensitive
Compaction Tolerance	Moderate
Water Table	12 Inches
Drainage	Moderate
Flood Tolerance	
Drought Tolerance	Sensitive
Moisture Regime	Moist, Wet
pH	4.6 through 7.2
Windbreak Group	

White Spruce

Picea glauca



Planting Ease

Spring Bareroot Easy

Fall Bareroot

Spring Container Easy

Fall Container Easy

Spring Seed

Fall Seed

Maintenance

Formal Low

Informal Low

2,4-D Tolerance Tolerant

Dicamba Tolerance Sensitive

Picloram Tolerance Sensitive

Clopyralid Tolerance

Artificial Light Tolerant

Sulfur Dioxide Moderate

Ozone Tolerance Tolerant

Hydrogen Flouride Moderate

Nitrogen Oxide Moderate

Pests/Problems

Allergens males 3, females 3

Invasiveness Non-Invasive

Toxicity

Cold Injury Not Susceptible

Storm Damage Not Susceptible

Biological Control

Mechanical Control

Chemical Control

Miscellaneous

Wildlife Rating High

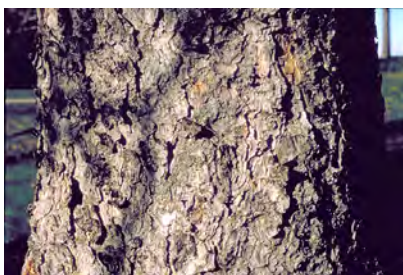
Insect Concerns Major

Disease Concern Major

Wildlife Concerns

Comments

Useful as a specimen, mass, hedge, and windbreak tree. Needle rust, canker, yellow headed spruce sawfly are problems.



Bark



Fruit

White Spruce
Picea glauca



Immature