



## BWSR State Cost Share Grant for FY 2010

### Fillmore Soil and Water Conservation District

**BWSR Grant Awarded**  
\$ 23,281

**Grant Period (incl. extensions)**  
From: August 18, 2009  
To: June 30, 2011

**Funds Returned to State**  
Type \$0  
Date Fund Returned: N/A

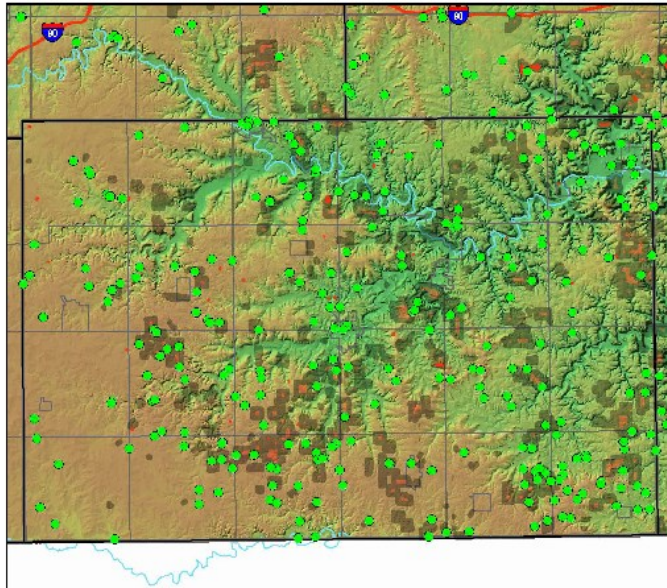
#### Expenditures by Category

<b>Administration/ Coordination</b>	
<b>Project Development</b>	
<b>Technical and Engineering</b>	\$ 4,656.20
<b>Construction</b>	\$ 18,624.80
<b>Total Expenditures</b>	\$ 23,281.00

**PROJECT CONTACT**  
Donna Rasmussen, Administrator  
507-765-3878, ext 3  
donna.rasmussen@fillmoreswcd.org

*Prepared by Fillmore SWCD  
for BWSR Website Reporting Requirements*

### Map of Conservation Practices in Fillmore County (as reported in eLINK for the MN Board of Water and Soil Resources)



#### Outputs and Outcomes

**Outputs:** Five waterways (total of 9.79 acres) and one sediment basin were installed in 2010 using funding from FY2010. In 2011, FY10 grant funds were used to install 2 grassed waterways (3,985 feet total), one farmstead windbreak, and for one well decommissioning. In 2012, one water and sediment control basin was completed.

**Outcomes:**

Water pollution reduction estimates for these projects:  
Reduction in Soil Loss = 115 tons per year



**Purpose of a  
grassed waterway:**

- To convey runoff from terraces, diversions or other water concentrations without causing erosion or flooding.
- To reduce gully erosion.
- To improve water quality.