



BWSR State Cost Share Grant for FY 2011

Fillmore Soil and Water Conservation District

BWSR Grant Awarded
\$ 23,520

Grant Period (incl. extensions)
From: August 17, 2010
To: June 30, 2012

Funds Returned to State
Type \$38.44
Date Funds Returned: 2/12/13

Expenditures by Category

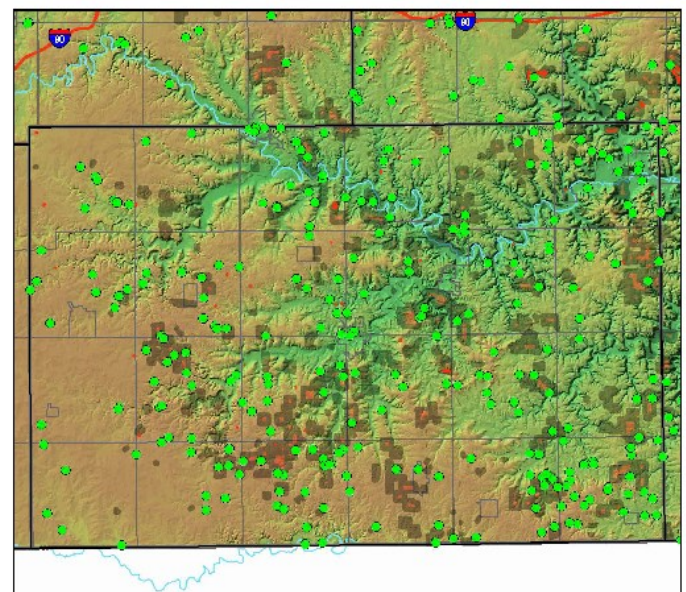
As of 12/31/2013

Administration/ Coordination	
Project Development	
Technical and Engineering	\$ 4,680.06
Construction	\$ 18,720.25
Total Expenditures	\$ 23,400.31

PROJECT CONTACT
Donna Rasmussen, Administrator
507-765-3878, ext 3
donna.rasmussen@fillmoreswcd.org

*Prepared by Fillmore SWCD
for BWSR Website Reporting Requirements*

Map of Conservation Practices in Fillmore County (as reported in eLINK for the MN Board of Water and Soil Resources)



Outputs and Outcomes

Outputs: Two waterways (plus one funded in part with FY10 funds and reported with FY10 projects) totaling 1870 feet, 1000 feet of terrace with underground outlet, and six farmstead windbreaks were installed in 2011. In 2012, two grassed waterways, totaling 1,590 feet, 800 feet of terrace with underground outlet, and five farmstead windbreaks were completed.

Outcomes:
Water pollution reduction estimates for these projects:
Reduction in Soil Loss = 46.5 tons per acre per year



Waterway needs are often evident after a rain event. A waterway's purpose is to:

- convey runoff from terraces, diversions or other water concentrations without causing erosion or flooding.
- reduce gully erosion.
- improve water quality.