



BWSR FY2016 Targeted Watershed Grant: Root River Field to Stream Partnership

Fillmore Soil and Water Conservation District

BWSR Grant Awarded
\$ 493,233

Grant Period (incl. extensions)
From: August 9, 2016
To: December 31, 2020

Funds Returned to State
Type \$0
Date Fund Returned: N/A

Expenditures by Category

As of 12/31/2016

Grassed Waterway Installation	\$ 0
East Willow Creek Flood Control Structure Restoration	\$ 0
Non-structural Management Practices	\$ 0
Technical and Engineering	\$ 5,500.70
Water Storage Structures	\$ 20,713.54
Administration/Coordination	\$ 779.52
Total Expenditures	\$ 26,993.76

PROJECT CONTACT

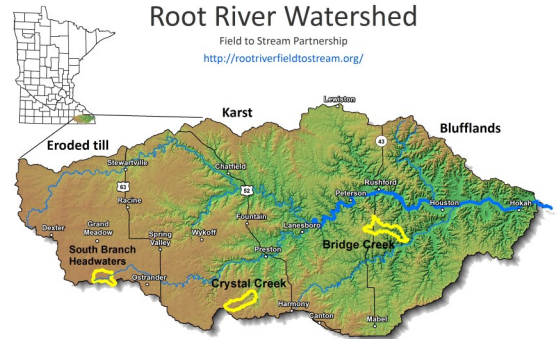
Donna Rasmussen, Administrator
507-765-3878, ext 3
donna.rasmussen@fillmoreswcd.org

*Prepared by Fillmore SWCD
for BWSR Website Reporting Requirements*



Over the past six years, the Root River Field to Stream Partnership (FSP) (<http://rootriverfieldtostream.org/>) has been working in three small subwatersheds of the Root River (Bridge Creek, Crystal Creek and South Branch Headwaters) to build trust with local landowners and to fill a critical gap in understanding of how pollutants transported at the field scale translate into downstream water quality. The FSP is a cooperative project between state (MN Dept. of Ag) and local government (Fillmore, Root River and Mower SWCDs), farmers, several agricultural groups and The Nature Conservancy. The primary goals are to evaluate nutrient and sediment losses from agricultural fields and measure the effectiveness of conservation practices at both the field and watershed scale. Six years of intensive baseline monitoring and extensive planning to prioritize and target conservation practices provides a comprehensive framework for evaluating practices and guide future implementation activities. Monitoring will continue for at least five years after practices have been installed. The FSP is one of the most comprehensive and intensive studies of its kind in the upper Midwest. Overall, the project offers the unique opportunity to assess what is possible for attaining water quality goals in agriculturally dominated watersheds. Although the project is focusing on three small sub-watersheds of the Root, the information and conservation delivery approach can be applied across the Root River watershed and greater southeastern Minnesota.

The funding from this grant is paired with \$804,385 from a FY2016 Clean Water Fund Grant for implementation of BMPs in the watersheds, including both structural and non-structural practices (cover crops, N management), restoration of a flood control structure in Crystal Creek watershed, and administrative and technical assistance from staff in the Root River, Mower and Fillmore SWCD offices and other technical and engineering services engineering assistance from others.



Outputs and Outcomes

Outputs:

2016: Completed two water and sediment control basins; three waterway projects in the works using state funds and three waterway projects with FY2017 EQIP applications.

Outcomes (cumulative):

Water pollution reduction estimates for projects completed:
Estimated Phosphorus reduction = 4.25 lbs./year
Estimated Sediment (TSS) reduction = 8.5 Tons/year



BWSR FY2016 Clean Water Fund Grant: Root River Field to Stream Partnership Phase II Implementation

2016:

Grassed waterways: Planning was completed with five cooperators for six waterway projects for construction in 2017, three of which are in two applications for EQIP funding.

Water storage practices: One project for two water and sediment basins completed. TAA: Cody Fox with Aaron Gamm in training.

Technical assistance: Mower SWCD technician completed on project for two water and sediment basins. Planning was completed with five cooperators for six waterway projects for construction in 2017, three of which are in two applications for EQIP funding. There was also staff time for meetings, survey, and investigation on a possible two stage ditch project. 155 hours @\$32.98/hr.

Administration/Coordination: Mower SWCD Administrator meetings with technicians regarding project planning, funding, etc. 12 hrs @\$64.96